

1. 1824 core Outdoor Optical Cable Cross-Connecting Cabinet with muddy ground support base, 304 stainless steel Material, feeder cable area with 2 pcs integrated trays (each tray with 24 fibers capacity, Duplex LC/UPC adapters and loose buffer pigtail 1.5m, G652D fiber, LSZH), distribution cable area with 53 pcs integrated trays (each tray with 24 fibers capacity, Duplex LC/UPC adapters and loose buffer pigtail 1.5m, G652D fiber, LSZH), with 16 pcs 1X32 splitter tray, with 100m .protective transparent tubes.

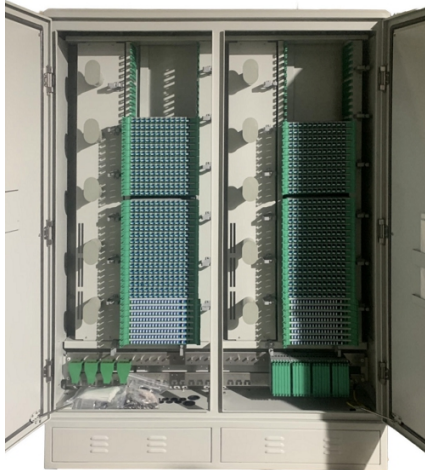
1056 core Outdoor Optical Cable Cross-Connecting Cabinet, left-right, variant A, with muddy ground support base, 304 stainless steel Material, feeder cable area with 1 pc integrated trays (each tray with 24 fibers capacity, Duplex LC/UPC adapters and loose buffer pigtail 1.5m, G652D fiber, LSZH), distribution cable area with 31 pcs integrated trays (each tray with 24 fibers capacity, Duplex LC/UPC adapters and loose buffer pigtail 1.5m, G652D fiber, LSZH), with 9 pcs 1X32 splitter tray, with 100m .protective transparent tubes.

624 core Outdoor Optical Cable Cross-Connecting Cabinet with muddy ground support base, 304 stainless steel Material, feeder cable area with 1 pc integrated trays (each tray with 24 fibers capacity, Duplex LC/UPC adapters and loose buffer pigtail 1.5m, G652D fiber, LSZH), distribution cable area with 17 pcs integrated trays (each tray with 24 fibers capacity, Duplex LC/UPC adapters and loose buffer pigtail 1.5m, G652D fiber, LSZH), with 6 pcs 1X32 splitter tray, with 100m .protective transparent tubes.

1248 core Outdoor Optical Cable Cross-Connecting Cabinet with muddy ground support base, 304 stainless steel Material, feeder cable area with 2 pcs integrated trays (each tray with 24 fibers capacity, Duplex LC/UPC adapters and loose buffer pigtail 1.5m, G652D fiber, LSZH), distribution cable area with 34 pcs integrated trays (each tray with 24 fibers capacity, Duplex LC/UPC adapters and loose buffer pigtail 1.5m, G652D fiber, LSZH), with 12 pcs 1X32 splitter tray, with 100m .protective transparent tubes.

336 core Outdoor Optical Cable Cross-Connecting Cabinet with muddy ground support base, 304 stainless steel Material, feeder cable area with 1 pc integrated trays (each tray with 24 fibers capacity, Duplex LC/UPC adapters and loose buffer pigtail 1.5m, G652D fiber, LSZH), distribution cable area with 9 pcs integrated trays (each tray with 24 fibers capacity, Duplex LC/UPC adapters and loose buffer pigtail 1.5m, G652D fiber, LSZH), with 3 pcs 1X32 splitter tray, with 100m .protective transparent tubes.

1.1 General properties:



Note: the picture provides a reference only!

1.2 Application

- Connect feeder optical cable and distribution optical cable.

1.3 Equipment characteristics

- Using the **304 stainless steel material, RAL 7035**.
- The material of muddy ground support base is **angle steel**.
- Good anti-wild environment performance.
- With good sealing, anti-dust, water-resistance performance (IP54 acc. to IEC 529) .
- Use pickproof lock, good safety and effective anti-sabotage.
- Effective grounding wire fixing and protecting facilities.
- Each cabinet have on lower part of cabinet, hole with cover for possible communication in case when two cabinet will be installed side-by-side. The diameter of the hole is 80mm, and covered with metal round plate attached to cabinet with screws.
- On the back side (of lower cabinet part) there are also doors for access to inner space with incoming ducts and cables. Same as on front side. E.g. lower part of cabinet is symmetrical; front and back side are the same; left and right side are the same.
- The protruding screws are covered with glass glue to ensure complete coverage without exposing the screws
- On upper side of plinth, there are metal plates all around. The width of metal plate is 20 cm.
- Each splitter tray is numbered with lettering and each integrated tray is numbered with sticker.
- Base and door lock keys are common.

1.4 Specifications

- Voltage Proof: 3000VDC.
- Operation Environment Temperature : -40°C ~ +65°C.
- Product size: 1450 mm (H)*750 mm (W)*320mm (D) for 336D.
 1506 mm (H)*750 mm (W)*335 mm (D) for 624D.
 1406 mm (H)*750 mm (W)*570mm (D) for 1248D
 1406 mm (H)*1450 mm (W)*350mm (D) for 1056D Variant A.
 2010 mm (H)*1450 mm (W)*350mm (D) for 1824D.

Note: The nominal size may vary ± 10 mm.

- cable inlets (holes) :

Outdoor Optical Cable Cross-Connecting Cabinet	Information
1824 cores	Not less than 10 holes with 25mm diameter, not less than 10 holes with 30mm diameter and not less than 2 holes with 50mm diameter
1056 cores	Not less than 8 holes with 25mm diameter and not less than 8 holes with 30mm diameter
1248 cores	Not less than 8 holes with 25mm diameter and not less than 8 holes with 30mm diameter
624 cores	Not less than 6 holes with 25mm diameter and not less than 6 holes with 30mm diameter
336 cores	Not less than 3 holes with 25mm diameter and not less than 3 holes with 30mm diameter

1.5 Ordering information:

- Indicate the number of splicing fibers for feeder cable.
- Indicate the number of splicing fibers for distribution cable.

2. SM, Duplex LC/UPC adapter

2.1 Standard reference: IEC 61754-20.

2.2 General properties:



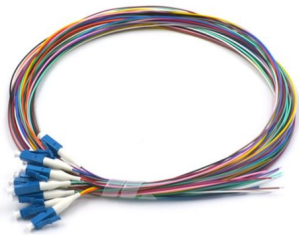
Note: the picture provides a reference only!

2.3 Technical characteristics

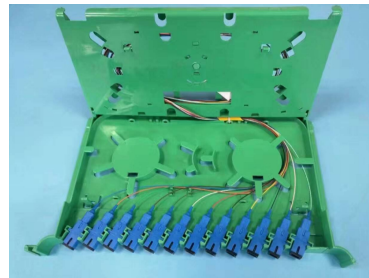
Type	LC/UPC
Insert loss (dB)	<0.20
Repeatability (dB)	≤0.20
Interchangeability (dB)	≤0.20
Material of sleeve	Ceramic
Operating temperature (°C)	-25~+70
Storage temperature (°C)	-25~+70
Industrial standard	IEC 61754-20

3. Loose buffer pigtail, SM, LC/UPC, G652D fiber, length 1.5m, LSZH sheath

3.1 Standard reference: IEC61754-20.



loose Buffer Pigtail in Integrated Tray



Integrated Tray, 24 fibers capacity

Color code scheme:

Fiber color	Red	Green	Blue	Yellow	White	Grey	Brown	Violet	Aqua	Black	Orange	Pink
Buffer color	Red	Green	Blue	Yellow	White	Grey	Brown	Violet	Aqua	Black	Orange	Pink

Note: The picture provides a reference only!

3.2 Technical characteristics:

Technical data	
Fiber type	Single mode
Connector type	LC
Grinding type	UPC
Insertion loss(dB)	≤0.2
Return loss(dB)	≥55
Operation temperature(°C)	-25 °C to +70 °C
Durability	>1000 times
Standard	IEC61754-20

3.3 Cable information

The outer sheath of the cable is LSZH material.

3.4 Optical fiber: G652D

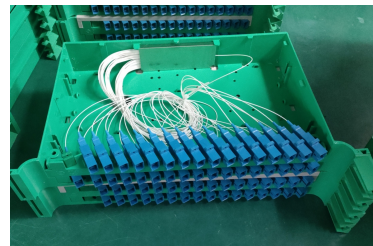
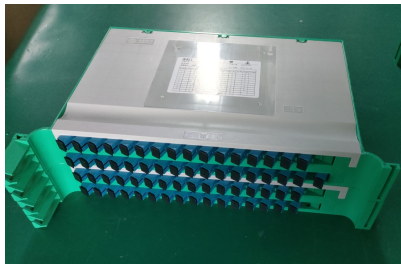
The optical fiber shall be made of high pure silica and germanium doped silica. The detail data of optical fiber performance are shown in the following table:

G.652D Fiber

Category	Description	Specifications
Optical Specifications	Attenuation @1310 nm	≤0.36 dB/km
	Attenuation @1550 nm	≤0.22 dB/km
	Zero Dispersion Wavelength	1300~1324 nm
	Zero Dispersion Slope	≤0.092 ps/nm ² ·km
	Dispersion coefficient @1310 nm @1550 nm	3.5 ps/(nm*km) 18 ps/(nm*km)
	Cable Cutoff Wavelength (λ_{cc})	≤1260 nm
	Macro Bending Loss (100 turns; Φ 50 mm) @1550 nm (100 turns; Φ 50 mm) @1625 nm	≤ 0.05 dB ≤ 0.10 dB
	Mode Field Diameter @1310 nm	9.2±0.4 μ m
Dimensional Specifications	Cladding Diameter	125 ±1 μ m
	Primary coating diameter(uncolored)	245 ± 10 μ m
	Core/Clad Concentricity Error	≤0.6 μ m
	Cladding Non-Circularity	≤1.0%
Mechanical Specifications	Proof Stress	≥0.69Gpa

4. splitter tray, 1:32, with LC/UPC adapter.

4.1 General properties:



Note: the picture provides a reference only.

4.2 Technical characteristics for splitter:

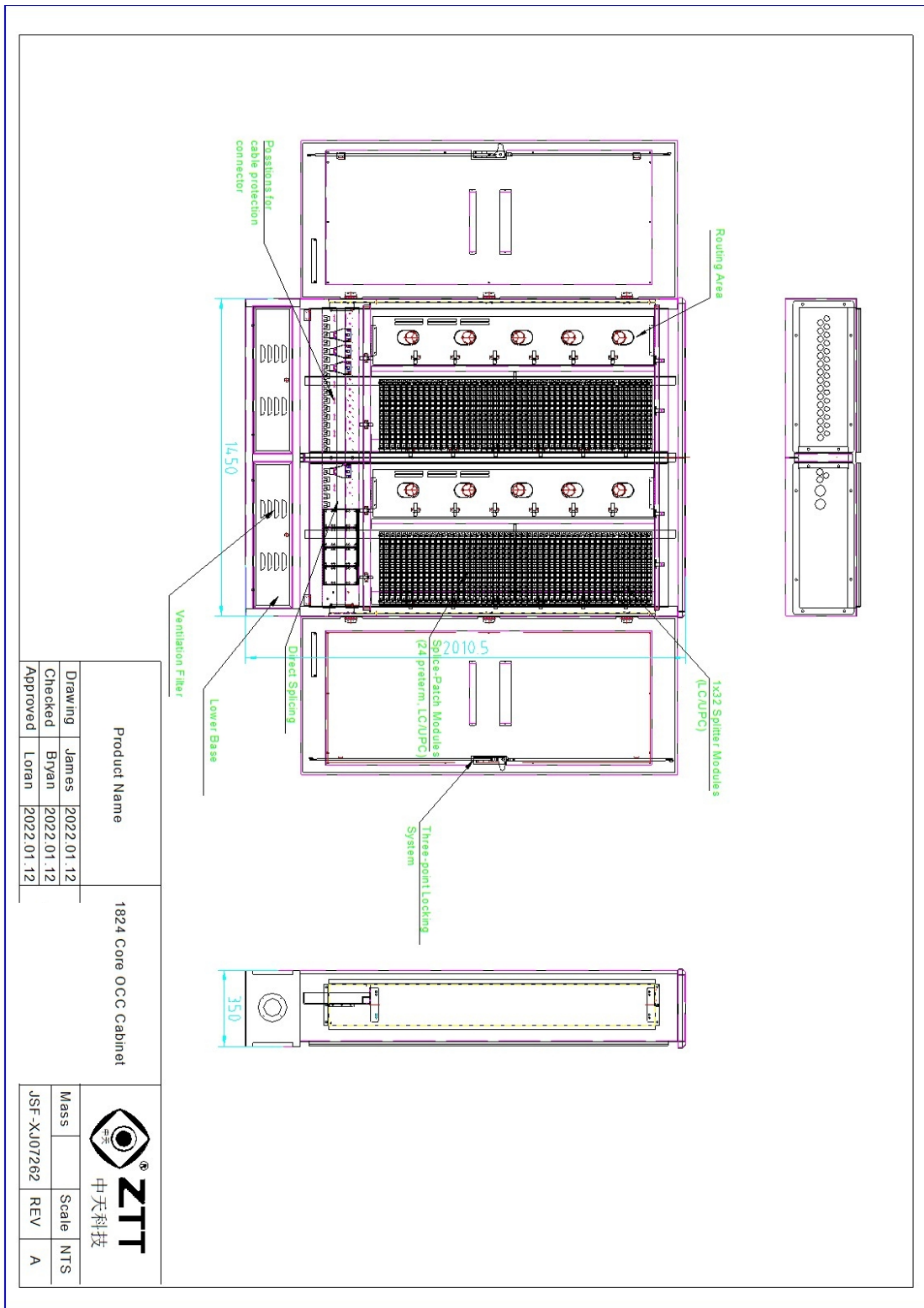
Type	1X32
Channel wavelength(nm)	1260-1650
Insertion loss(dB)	≤17.5
Loss Uniformity (dB)	≤1.7
Return loss (dB)	≥50
Polarization dependent loss(dB)	≤0.3
Directivity(dB)	≥55
Operating temperature (°C)	-40~+85
Storage temperature(°C)	-40~+85

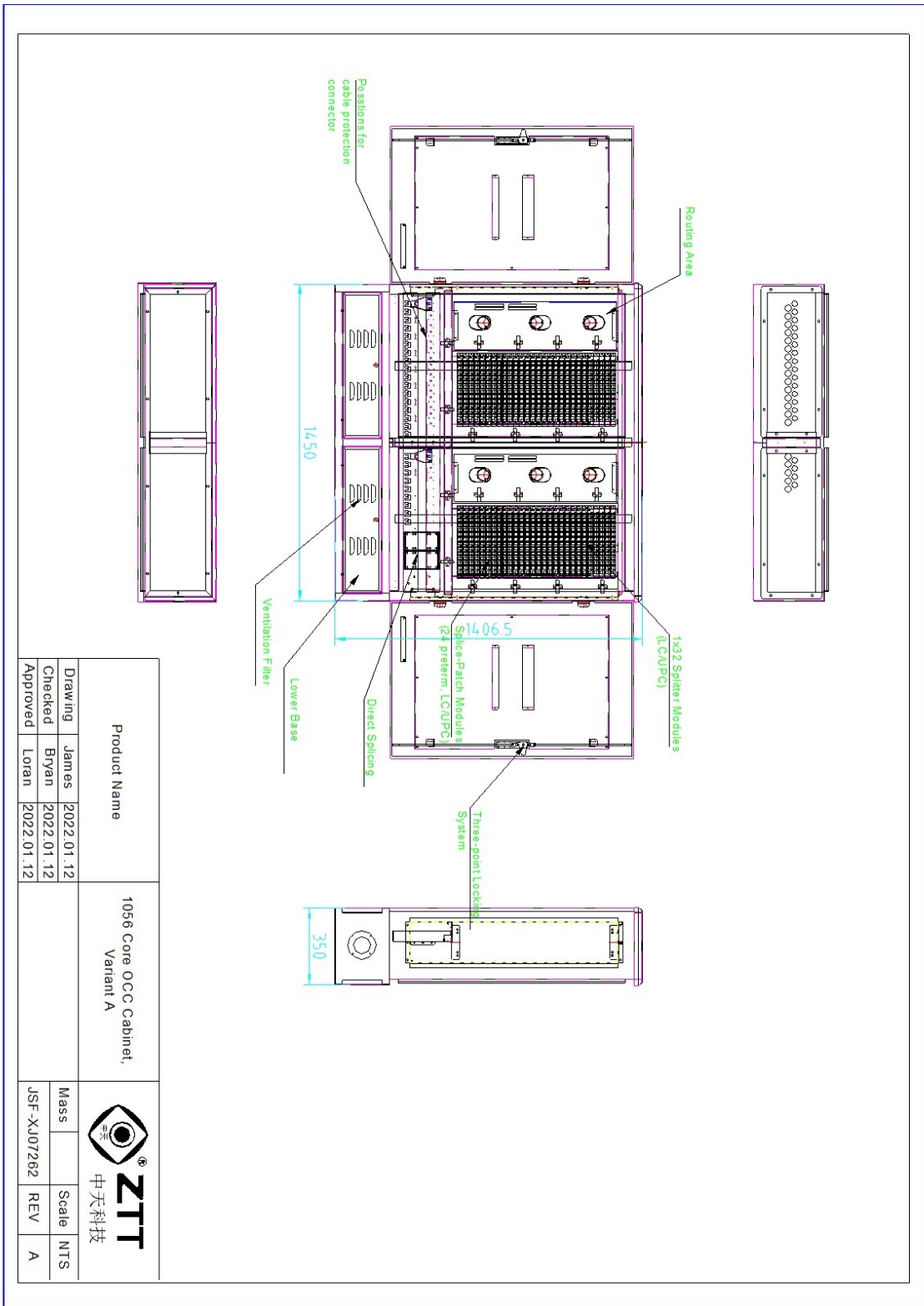
Note1: Focus on uniform distribution device; the fiber type is single-mode optical fiber.


Note2: All parameter tests with connectors.

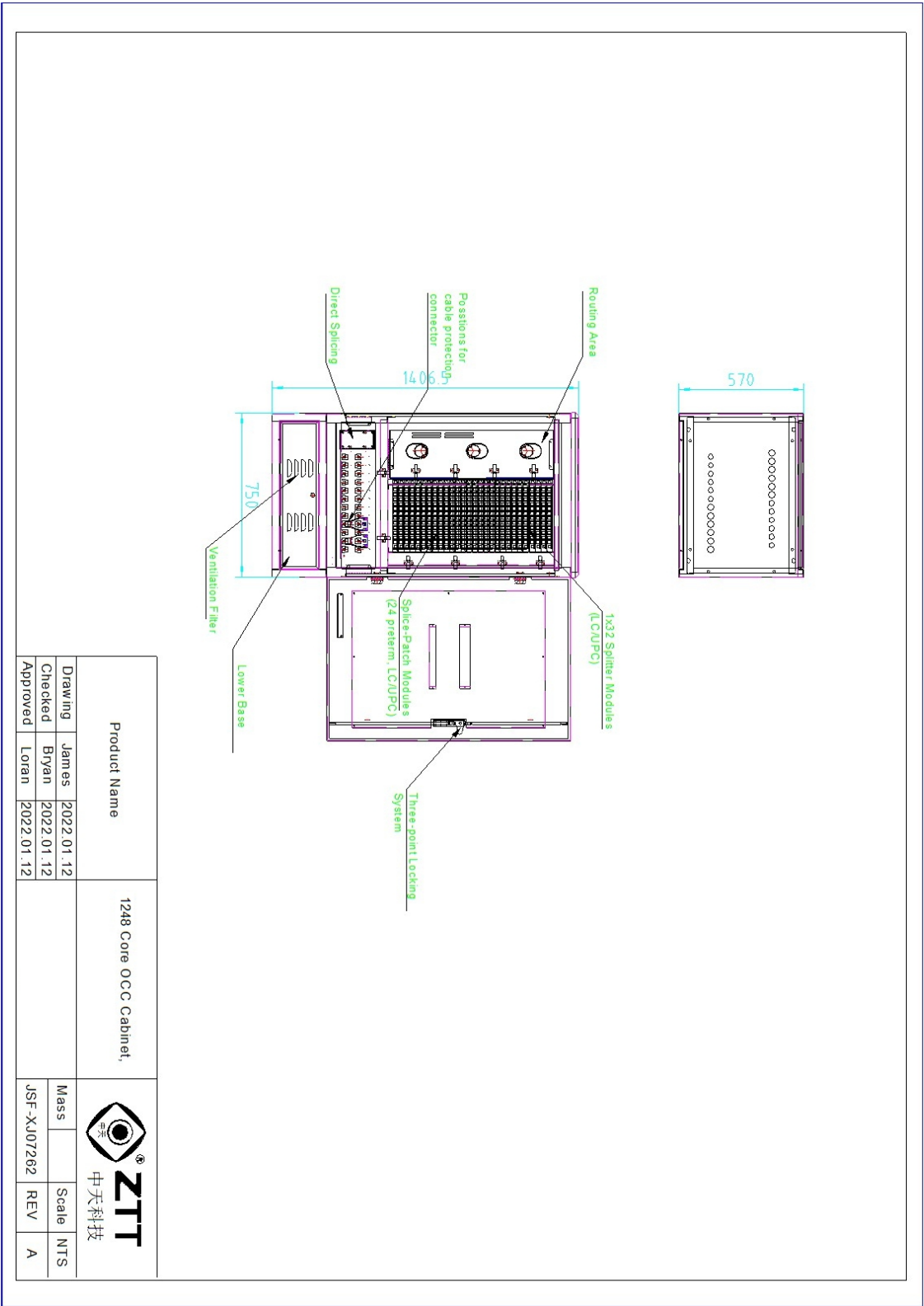
5.CAD Drawings

5.1 OCC Cabinet

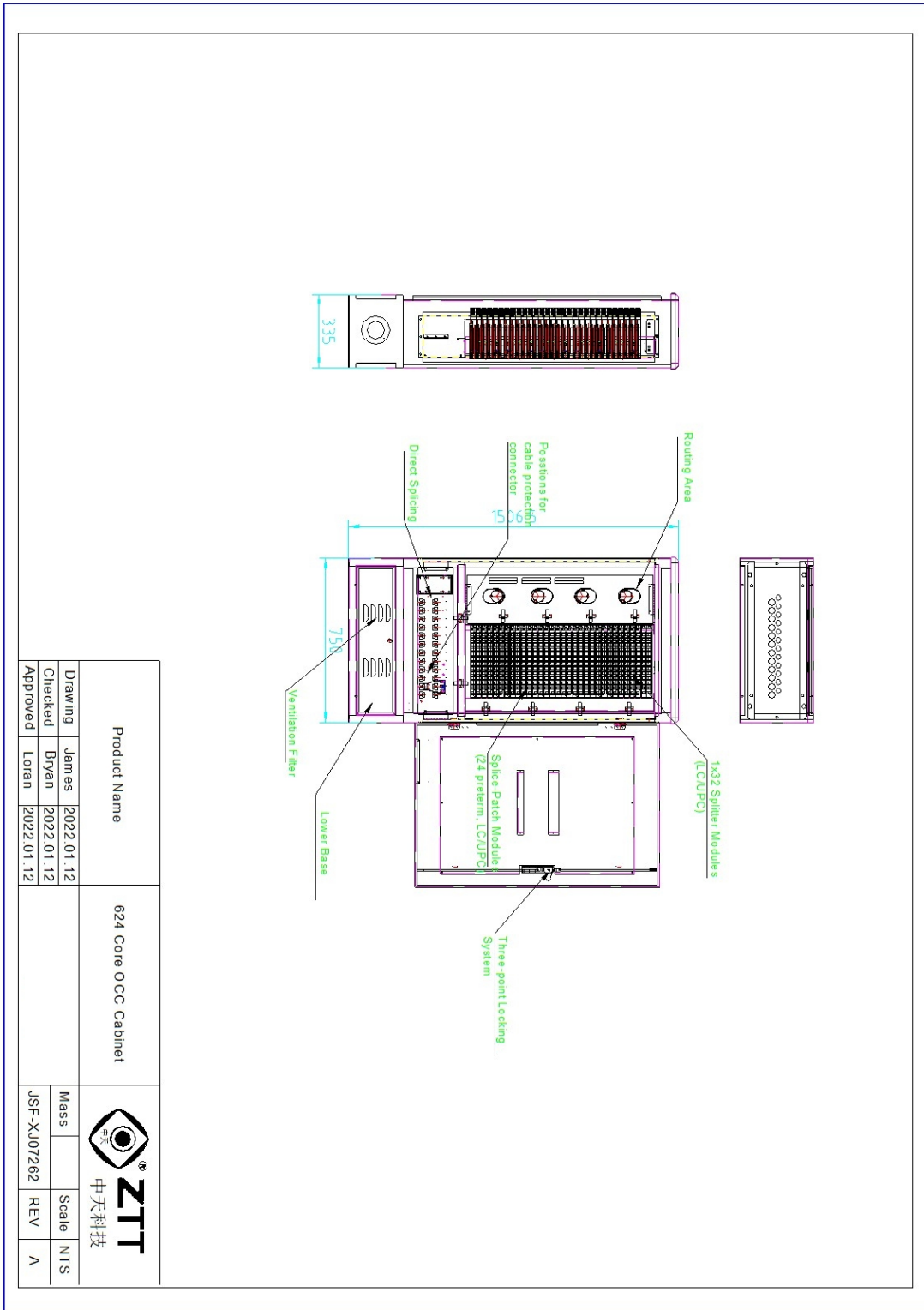





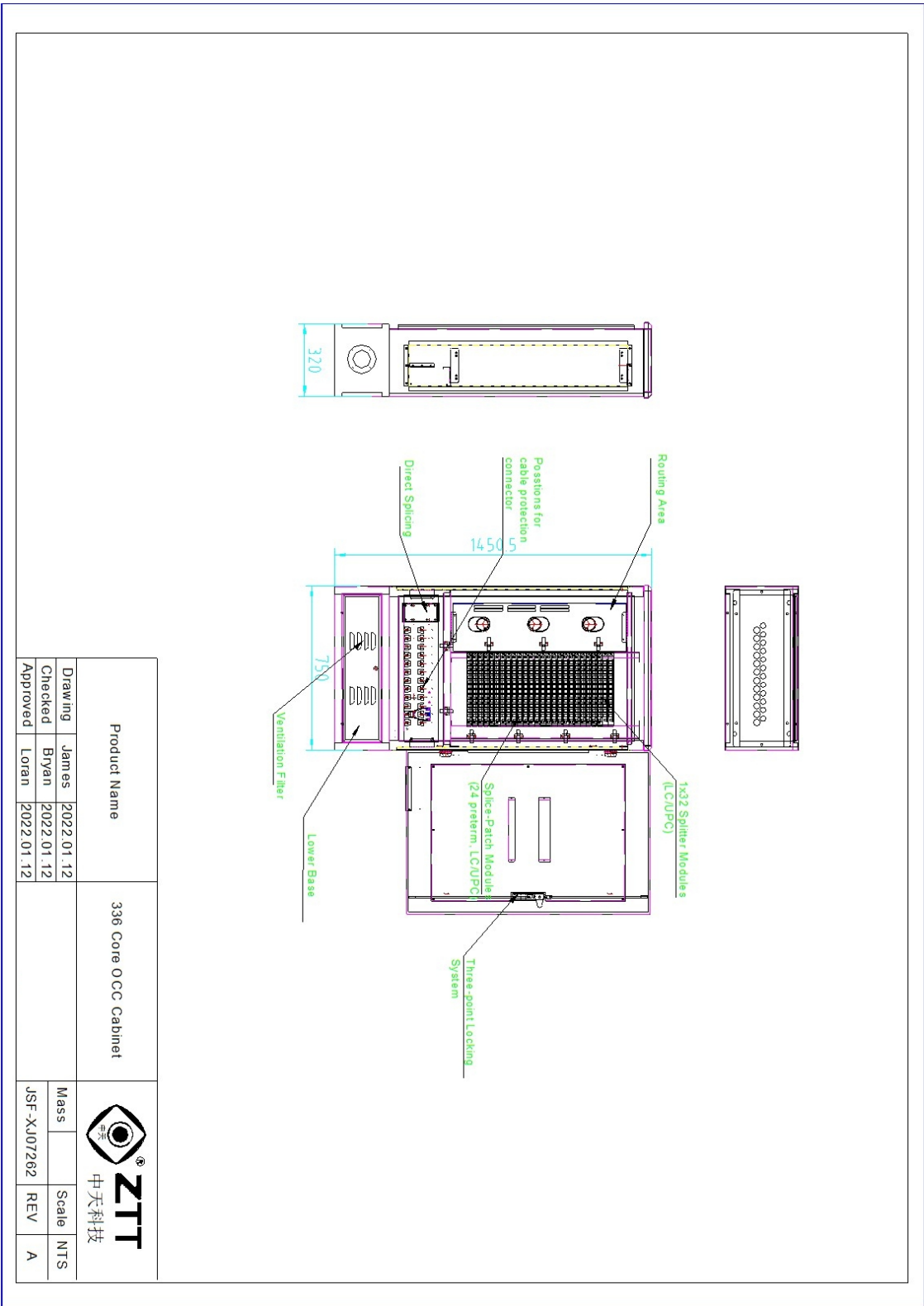
Product Name		1056 Core OCC Cabinet, Variant A		 ZTT 中天科技	
Drawing	James	2022.01.12		Mass	
Checked	Bryan	2022.01.12		Scale	NTS
Approved	Loran	2022.01.12		JSF-XJ07262	REV A



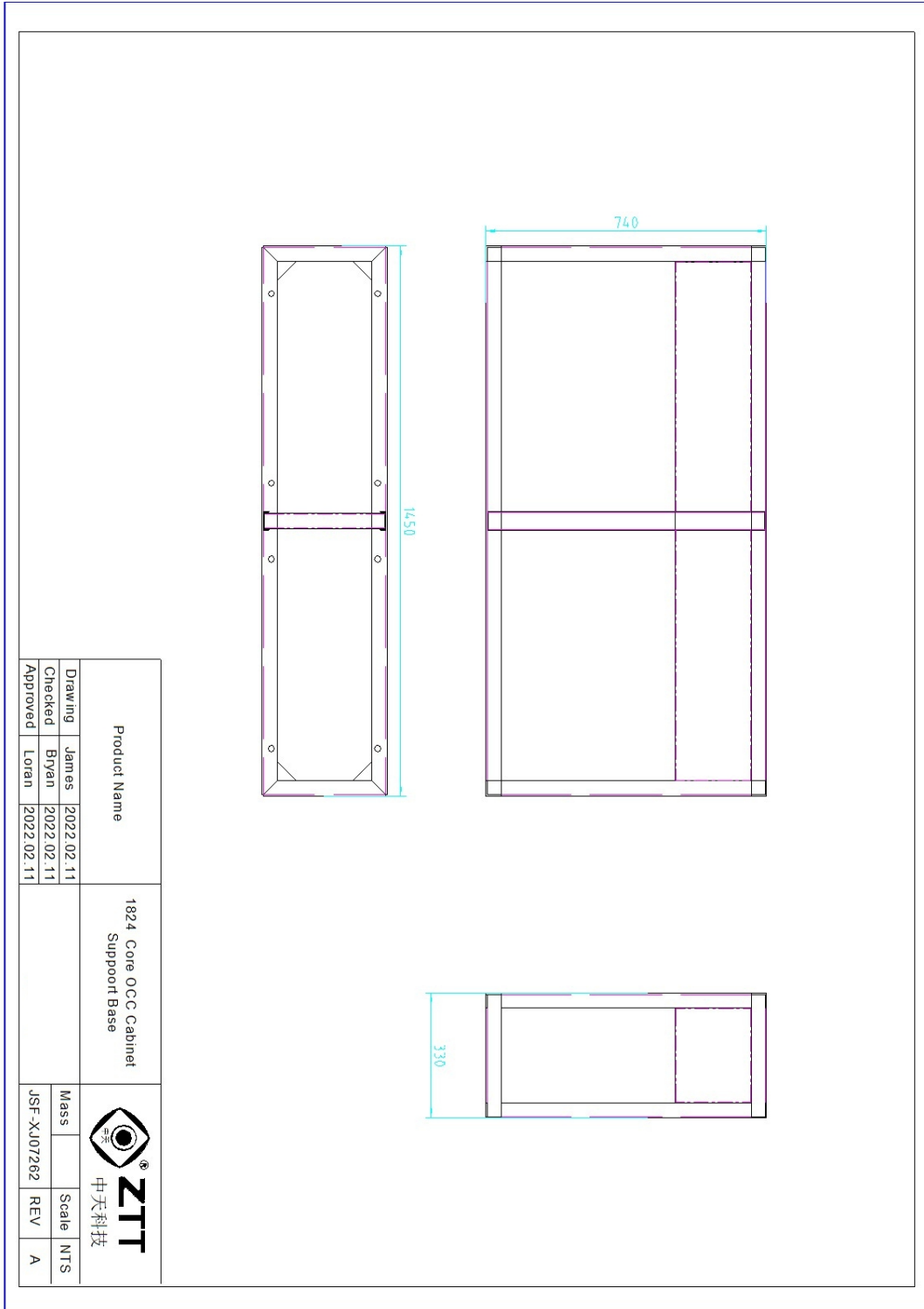
Product Name		1248 Core OCC Cabinet,		 ZTT 中天科技			
Drawing	James	2022.01.12	Mass			Scale	NTS
Checked	Bryan	2022.01.12	JSF-XJ07262			REV	A
Approved	Loran	2022.01.12					

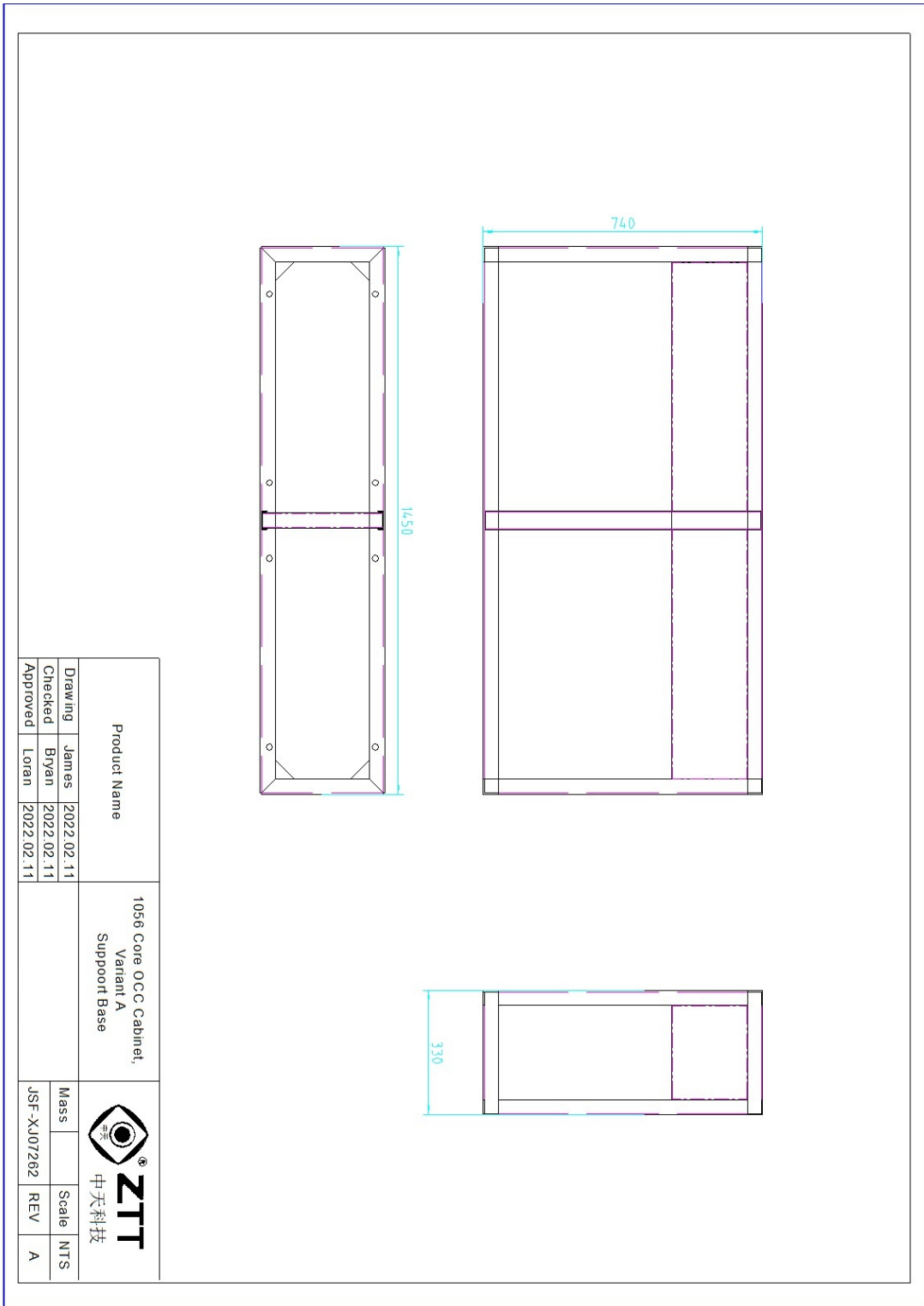



Product Name		624 Core OCC Cabinet		 ZTT 中天科技		
Drawing	James	2022.01.12	Mass			
Checked	Bryan	2022.01.12	Scale			NTS
Approved	Loran	2022.01.12	JSF-XJ07262			REV A

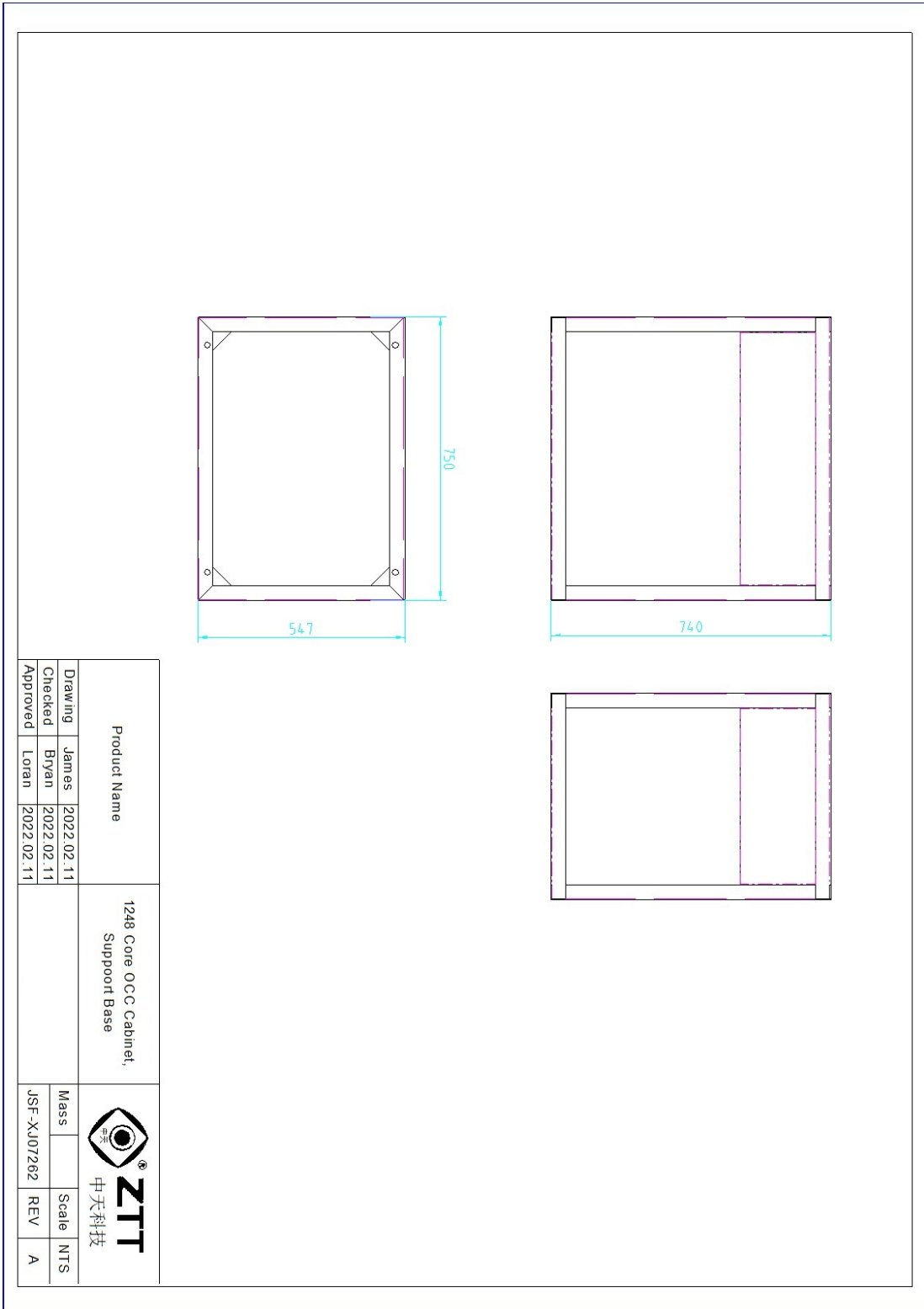


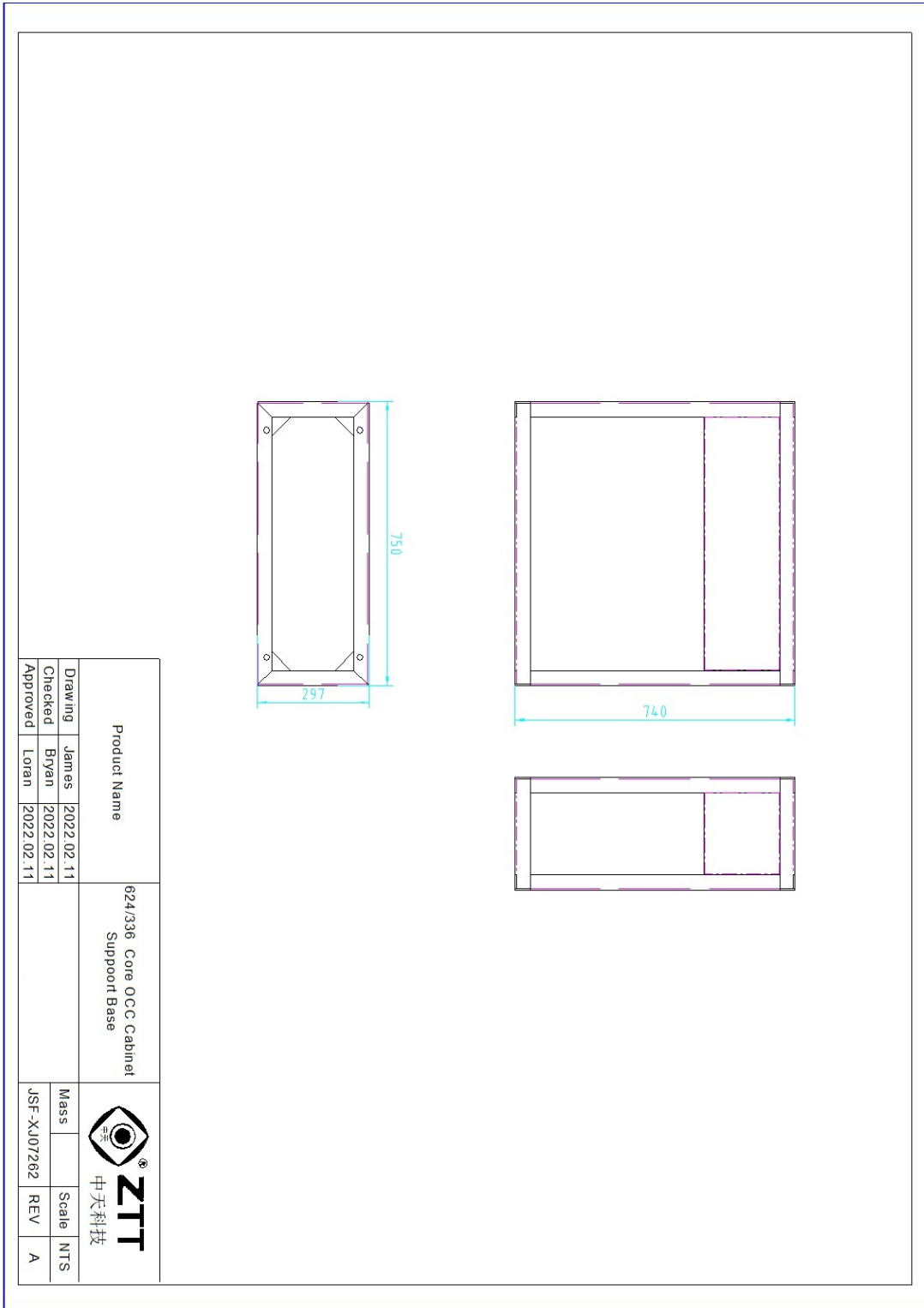
5.2 Muddy ground support base






Product Name		1056 Core OCC Cabinet, Variant A Support Base		 <p>ZTT 中天科技</p>
Drawing	James	2022.02.11	Mass	
Checked	Bryan	2022.02.11	Scale	
Approved	Loran	2022.02.11	REV	NTS A
		JSF-XJ07262		





Product Name		624/336 Core OCC Cabinet Support Base		 ZTT 中天科技
Drawing	James	2022.02.11	Mass	
Checked	Bryan	2022.02.11	JSF-XJ07262	
Approved	Loran	2022.02.11	Scale	
			REV	NTS
				A